



EXPANDING FUEL BREAKS TO BENEFIT WILDLIFE HABITAT

Sue Rodman, Forester

Division of Wildlife Conservation

sue.rodman@alaska.gov

(907) 267-2274

Delta Junction Bison Range Prescribed Fire Detail Map

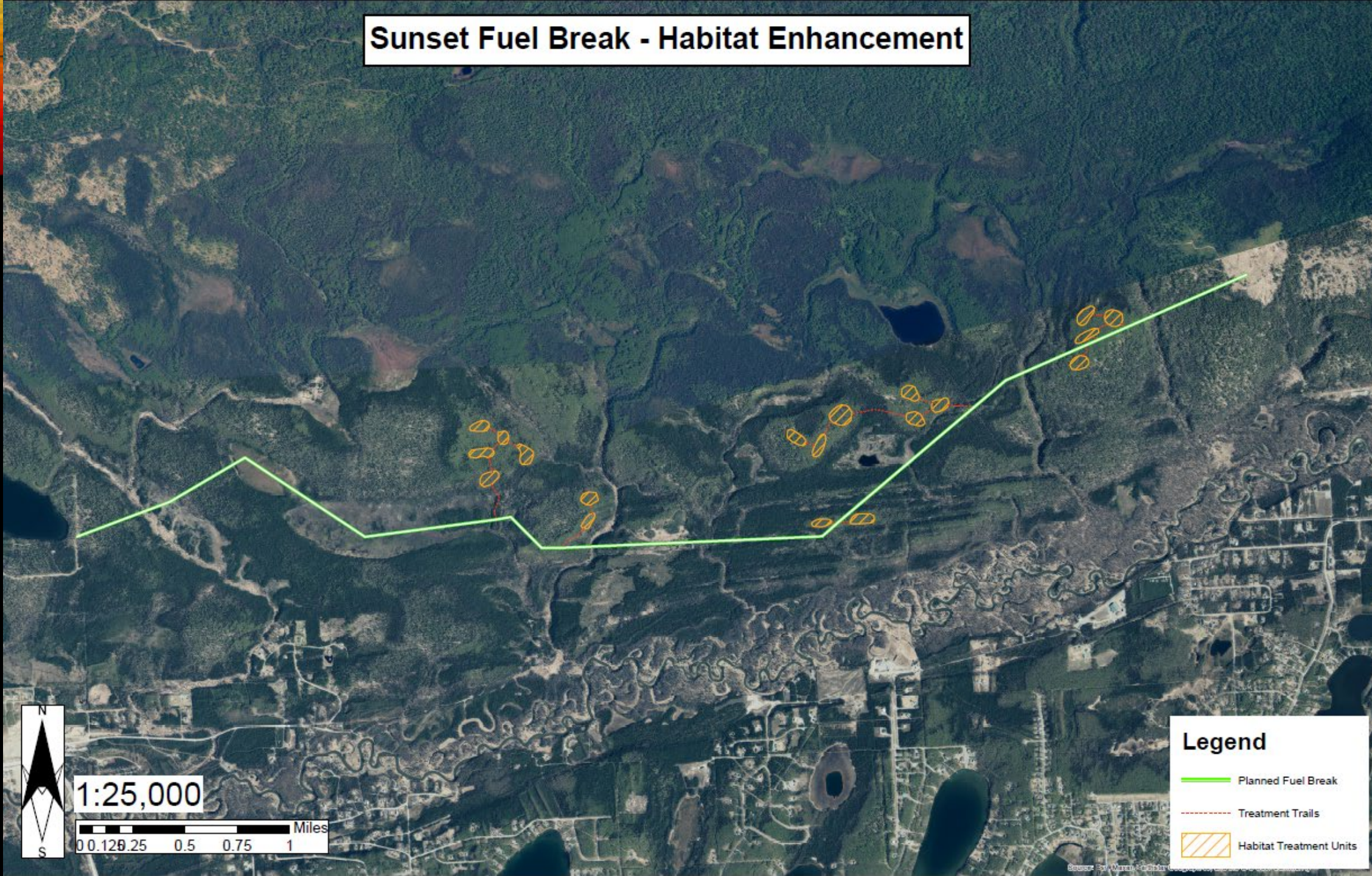


	Mileposts
	Delta Junction
	Minor Roads
	Rollerchop Fuel Break
	Ignition Sub-Units (Perimeters Roller chopped)
	Bison Trail
	Gerstle River Training Area
	Gerstle Phase II
	Panoramic Phase II
	Structures
	Bison Range
Fuel Break 1402	
Type	
	Dozer Blade
	Roller Chop

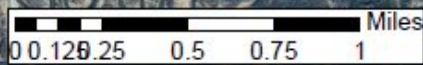
2 4 Miles

Source: Esri, DigitalGlobe, GeoEye, Earthstar Geographics, CNES/Airbus DS, USDA, USGS, AeroGRID, IGN, and the GIS User Community

Sunset Fuel Break - Habitat Enhancement



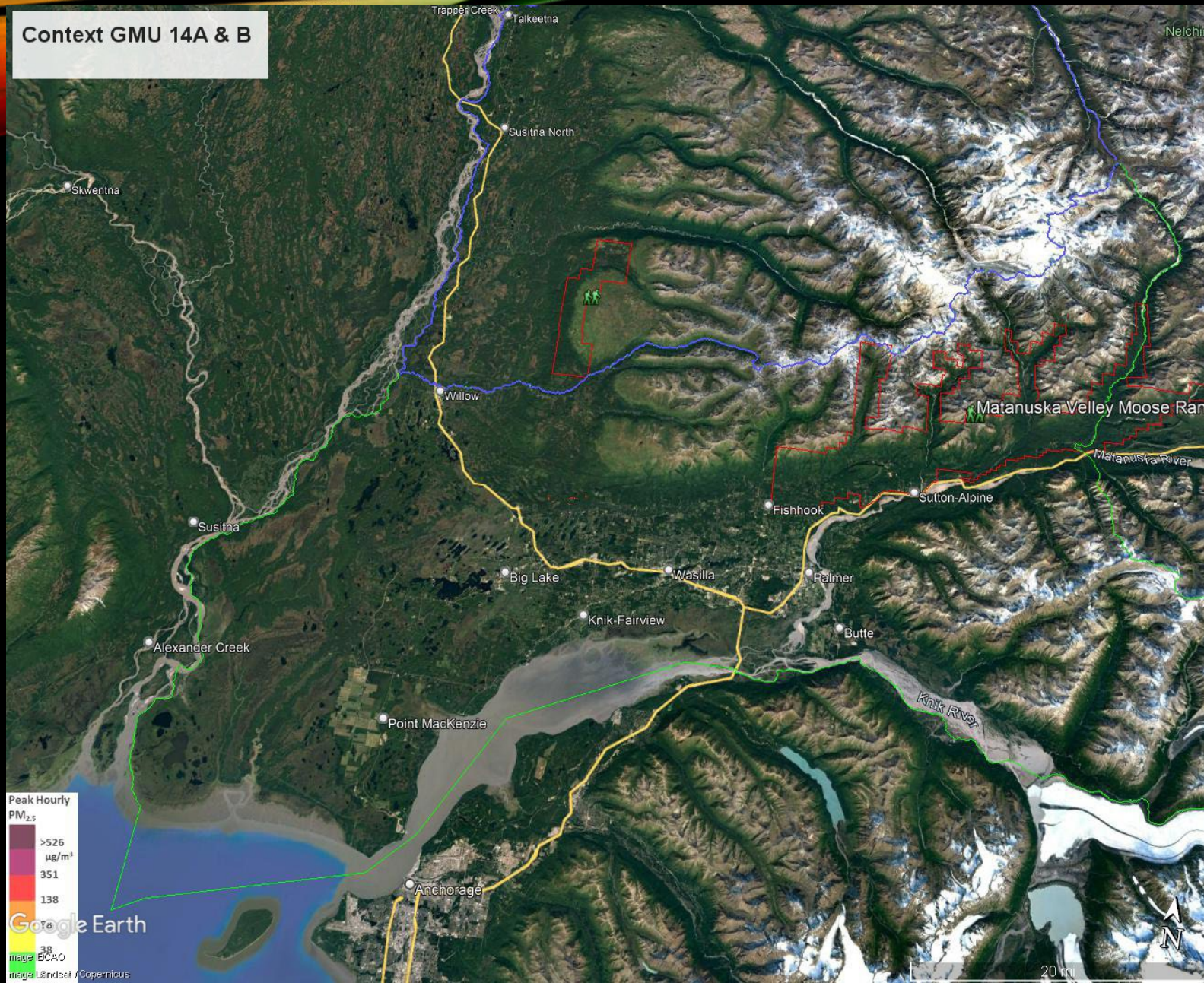
1:25,000



Legend

- Planned Fuel Break
- Treatment Trails
- Habitat Treatment Units

Context GMU 14A & B









COORDINATING WILDLIFE HABITAT ENHANCEMENT WITH FUEL BREAKS

- Consistent with the 2020 Alaska Forest Action Plan, this concept provides for wildlife habitat through silvicultural practices based on guidance from agency literature
- ADFG can apply the same or similar public scoping process to the project as done by DOF&FP for the fuel break – or coordinate simultaneously
- Suggest to implement a cooperative agreement between agencies to describe the expectations, process, and other details to ensure feasibility and functionality.
- ADFG is planning to dedicate up to \$1M for habitat enhancement projects beginning FY24. Non-federal match is required; in-kind match is allowed – fuel break construction does count toward a match.
- ADFG offers staff support to DOF&FP partnership projects.



OPPORTUNITIES TO ENHANCE HABITAT AND MITIGATE FIRE HAZARD CAN BE EXPLORED AT FUEL BREAK LOCATIONS NEAR COMMUNITIES AND ON ADFG REFUGES, CRITICAL HABITAT AREAS & WILDLIFE RANGES.